

Alphabet: The letter "Ff"



完全版テキストはレッスン前に

担当講師から受け取って下さい

講師のスカイプチャットにテキスト名を送って下さい

Your teacher can send you the complete material.

Please ask them to send the complete version of this material before the lesson.

I. Let's watch!



(Phonics) <https://www.youtube.com/watch?v=ltrfqZYLBE>

II. Name each picture and identify which starts with /Ff/.



完全版テキストはレッスン前に

担当講師から受け取って下さい

講師のスカイプチャットにテキスト名を送って下さい

Your teacher can send you the complete material.

Please ask them to send the complete version of this material before the lesson.



II. Name each picture and identify which starts with /Ff/.



完全版テキストはレッスン前に

担当講師から受け取って下さい

講師のスカイプチャットにテキスト名を送って下さい

Your teacher can send you the complete material.

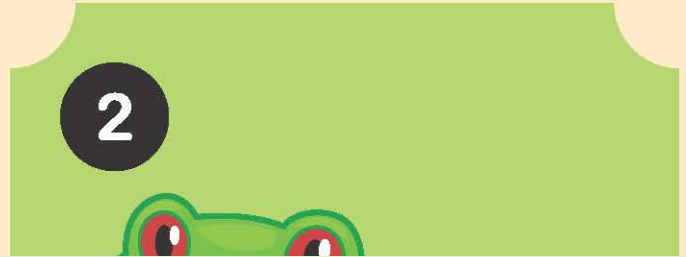
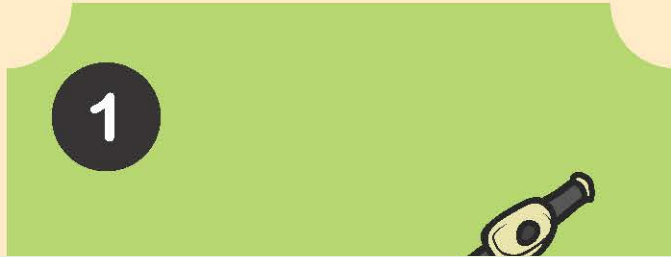
Please ask them to send the complete version of this material before the lesson.





II. Let's Practice!

Name the following pictures:



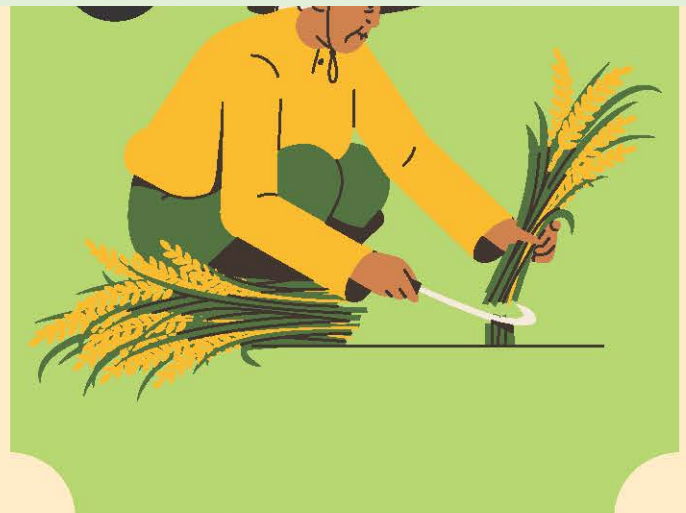
完全版テキストはレッスン前に

担当講師から受け取って下さい

講師のスカイプチャットにテキスト名を送って下さい

Your teacher can send you the complete material.

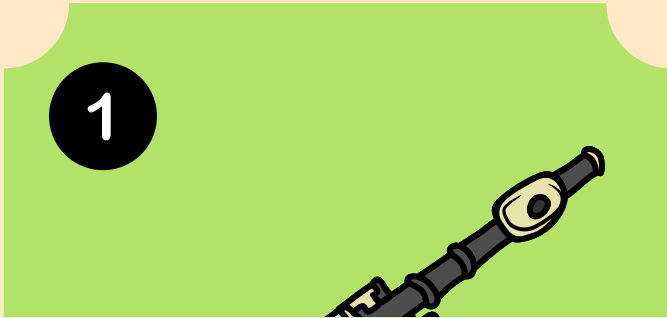
Please ask them to send the complete version of this material before the lesson.





II. Let's Practice!

Name the following pictures:



完全版テキストはレッスン前に

担当講師から受け取って下さい

講師のスカイプチャットにテキスト名を送って下さい

Your teacher can send you the complete material.

Please ask them to send the complete version of this material before the lesson.



face



farmer